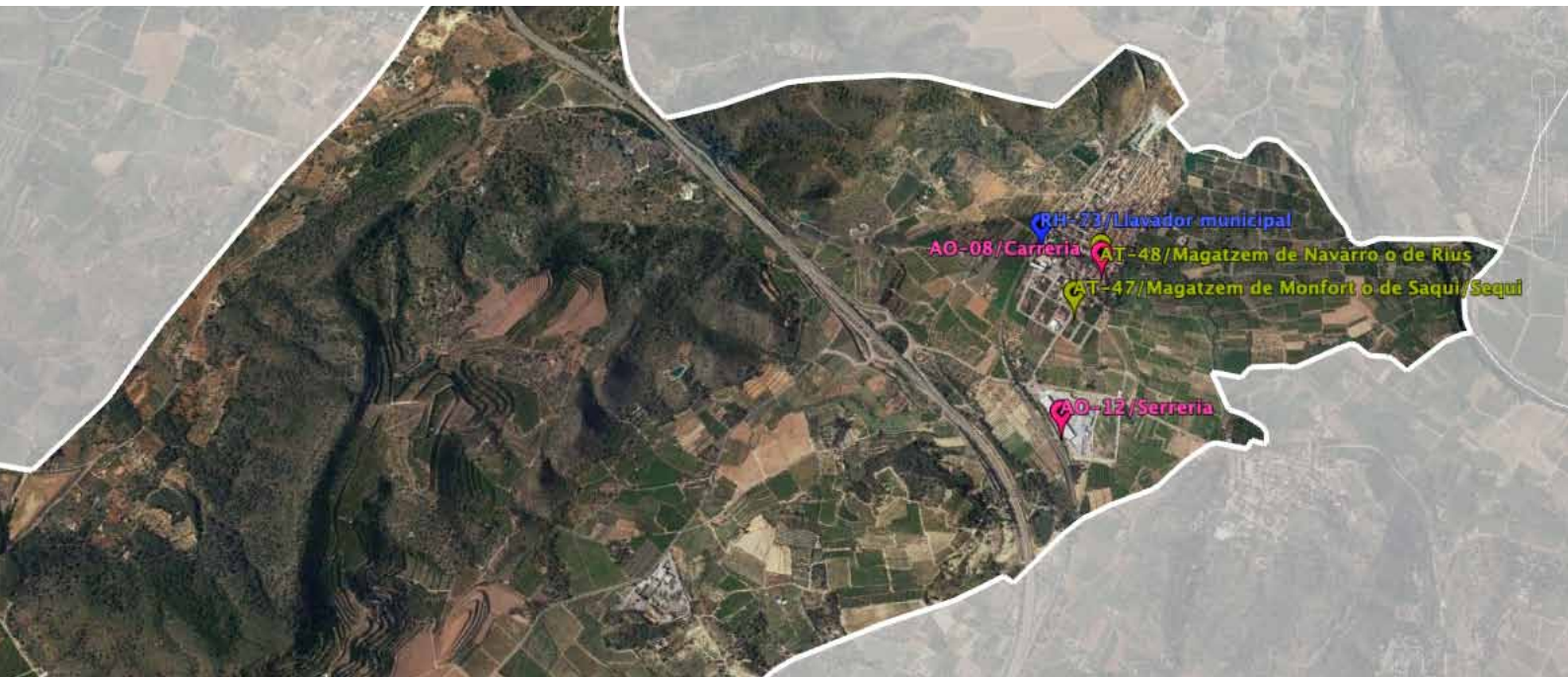


Landscapes and heritage of Algímia d'Alfara

Cultural routes



Algímia d'Alfara | Algímia en el **Cor**



CENTRO PARA EL CONOCIMIENTO DEL PAISAJE



Algímia d'Alfara | Algímia en el **Cor**

Ajuntament d'Algímia d'Alfara

plaça San Vicente 1, 46148 Algímia d'Alfara

www.algimiadealfara.es aalfara@gva.es 962626053

Coordination: Ajuntament d'Algímia d'Alfara, Centro para el Conocimiento del Paisaje

Texts: Juan A. Pascual, Helios Borja, Rafael Belda

© Photographs: Centro para el Conocimiento del Paisaje, [artarc]

© Cartography: Centro para el Conocimiento del Paisaje, Institut Cartogràfic Valencià, Google Earth

© Design & layout: [artarc]

726000

727000

ROUTE 2

The Palancia River and its
fluvial irrigation system

Route layout



Heritage resources

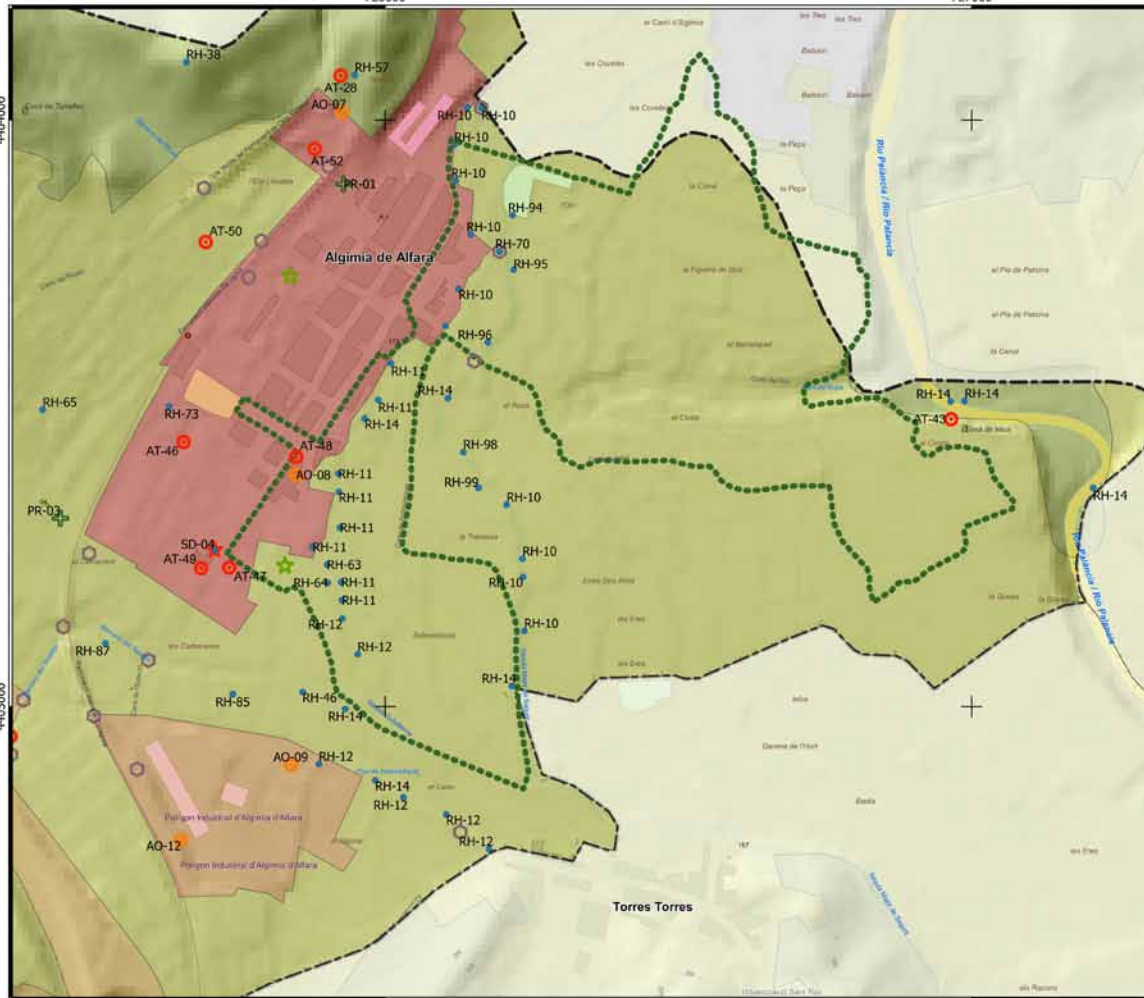
- Water resources
- ★ Defensive structures
- Communication system
- ☆ Botanical singularities
- ✚ Religious heritage
- △ Boundaries marks (caims)
- ⊙ Set of the "Fuente del Conde"
- ⊕ Extensive livestock farming
- ⦿ Crafts - Trades - Industry
- ⦿ Traditional agriculture

Landscape types

- Residential
- Industrial and commercial
- Extractive
- Rain-fed crops
- Irrigated crops
- Citrus fields
- Wooded
- Scrub
- Riparian
- Reservoir
- Algimia d' Alfara boundary

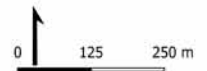
4404000

4403000



726000

727000



CENTRO PARA EL CONOCIMIENTO DEL PAISAJE

Rivers have historically been the great organisers of human life and activities. They are natural corridors that allow communication between populations but, above all, they were the places where populations settled easily, who occupied their banks, and used their waters to drink, to cultivate and to carry out many other activities that required hydraulic force to move machinery.

The Palancia River is one of those great backbones and one of the few whole entire length flows in the Valencian Community. In addition to the natural landscape that it creates (and can be seen in the flow of its waters and in the vegetation growing on its banks), we can also find small, medium and large river plains where human settlements and farming activities are located.

In the area where Algímia d'Alfara is located, some irrigation systems are supplied by the waters of the Canal of Sagunto (Acequia Mayor de Sagunto), fed by Palancia River water. It is a large landscape unit that also includes the irrigated fields of the municipalities of Alfara de la Barónia and the Torres Torres fields.



The importance of the Palancia River and its plains

The Palancia River is the main territorial feature of the populations in both the Camp de Morvedre and Alto Palancia regions. It has not only been the natural way for communications between the Mediterranean and Aragón, but is also a fluvial corridor that has favoured water supplies to guaranteeing supplying the irrigated areas that have remained on their alluvial plains since ancient times.

Consequently, the Palancia itself is a landscape-creating element that, in Algímia d'Alfara, is seen as both a natural river and a builder of a traditional irrigation structure whose waters are supplied by Acequia Mayor de Sagunto. The route highlights the importance of the Palancia River by its brief passage through Algímia, which stresses the singularities of the traditional irrigation system, as manifested in a dense network of small canals whose functionality is possible thanks to an endless number of assets (starters, showers, drains, etc.).

The cultural route on Palancia River landscapes shows this double characteristic. Its route also explores the natural landscape created by the river as it passes through the municipality of Algímia d'Alfara. It is worth mentioning its wide river bed and river terraces, where we can notice the presence of dominated riverside vegetation and water pools.



The other great landscape complex built in Algímia, thanks to Palancia River waters, is the traditional irrigation systems that occupy the alluvial plain between the town and the river bank on the right. Vegetables were formerly cultivated in its fields, which were replaced with time with orange trees, which is the dominant crop today.

Landscape resources

The Palancia River's own fluvial landscape structure includes a series of elements or cultural resources. Water pools (tolls in Valencian) found on the river beds were formerly employed as summer bathing places, and are worth mentioning.

The old orchards area is a heritage complex built on the main Acequia Mayor de Sagunto. It identifies a series of elements that make irrigation possible in all cultivated fields. The dense ditch system, regaderas (shower), partidores (partitions) and desagües (drains) stand out, but also lavaderos (laundries) and puentes (bridges).





1. Accumulation pond, irrigation
2. Marzo Horizontal Water Wheel
3. Acequia Mayor de Sagunto, laundry



4. Partidor (Partition) of the Piu bridge
5. La Palanca River Pool
6. Arab baths (Torres Torres)



7. Torres Torres partidor
8. Desagüe (Drain)
9. Falcó Well and Pool

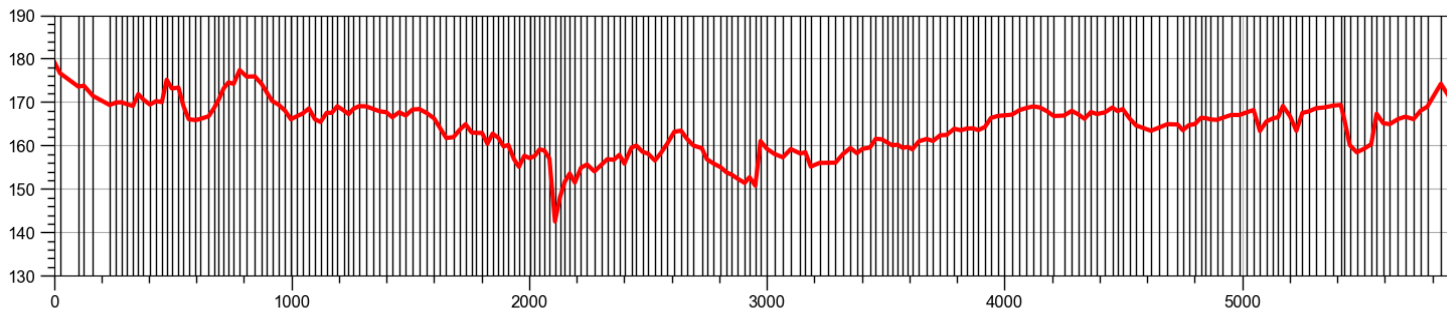


Technical characteristics

Duration	3-4 hours	Elevation	
Length	8,60 km	minimum altitude	152 m
Type of tour	Circular	maximum altitude	159 m
Accumulated slope		Average slope	
ascending	128 m	ascending (+)	2,30%
descending	- 128 m	descending (-)	2,10%

Reference mapping

Map Series (scale)	Sheets	Agency
National Topographic Map (1:25000)	668-I	Instituto Geográfico Nacional
Reference Mapping (1:50000)	12. El Camp de Morvedre	Ins. Cartogràfic Valencià
Reference Mapping (1:5000)	CV05-66825, 66834, 66835, 66836, 66844, 66845, 66846, 66854, 66855	Ins. Cartogràfic Valencià



Take care of the environment
Respecting nature



We must remember that when we do outdoor activities, such as the cultural routes of Algímia, we come into contact with tasks that other people do or with nature itself. Let's be respectful to these other occupants. In their design, all routes are circular, and their starting and ending points are located in places where there are containers and parking spaces.

Please sensibly manage the environment by taking into account the following considerations:

Waste: Use the authorised containers at the start-end points and leave rubbish in the appropriate ones. Do not leave rubbish on fields.

Noise: Try not to make loud noise; do not wear devices that make loud sounds, do not yell in fields. Please respect other inhabitants.

Traffic: Leave vehicles at the starting point of the route, which you will find in the same place. Avoid making unnecessary trips. Do not drive along the routes designed for walking or cycling with vehicles, unless it is absolutely essential.

Thank you very much for your **Cooperation**





Algímia d'Alfara | Algímia en el **Cor**

www.algimiadealfara.es



ajuntament d'algímia d'alfara



@ajuntamentdalgímia



CENTRO PARA EL CONOCIMIENTO DEL PAISAJE

C/ San Miguel, nº 41 12415 Matet (Castellón) T : 646 414 786
www.cpaisaje.org info@cpaisaje.org



VALÈNCIA
TURISME