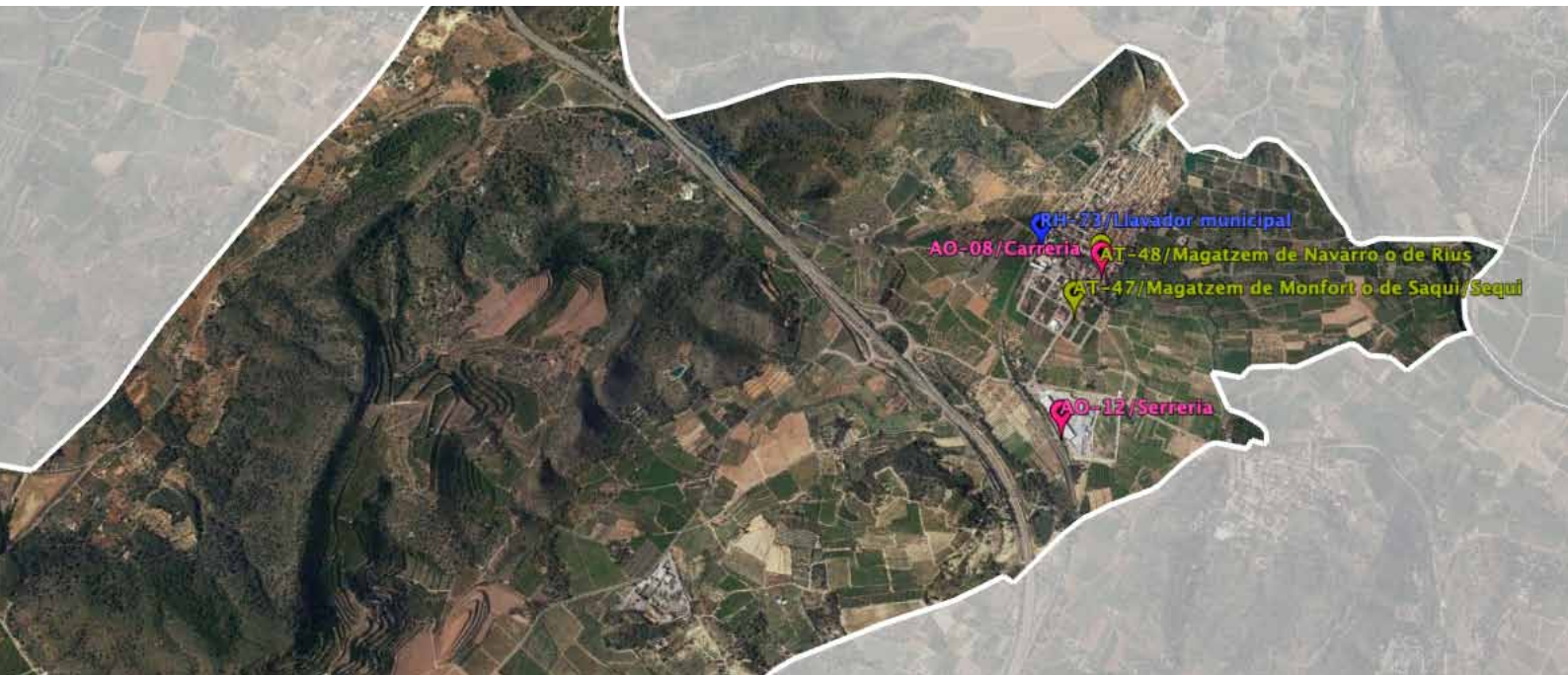


Landscapes and heritage of Algímia d'Alfara

Cultural routes





Algímia d'Alfara | Algímia en el **Cor**

Ajuntament d'Algímia d'Alfara

plaça San Vicente 1, 46148 Algímia d'Alfara

www.algimiadealfara.es aalfara@gva.es 962626053

Coordination: Ajuntament d'Algímia d'Alfara, Centro para el Conocimiento del Paisaje

Texts: Juan A. Pascual, Helios Borja, Rafael Belda

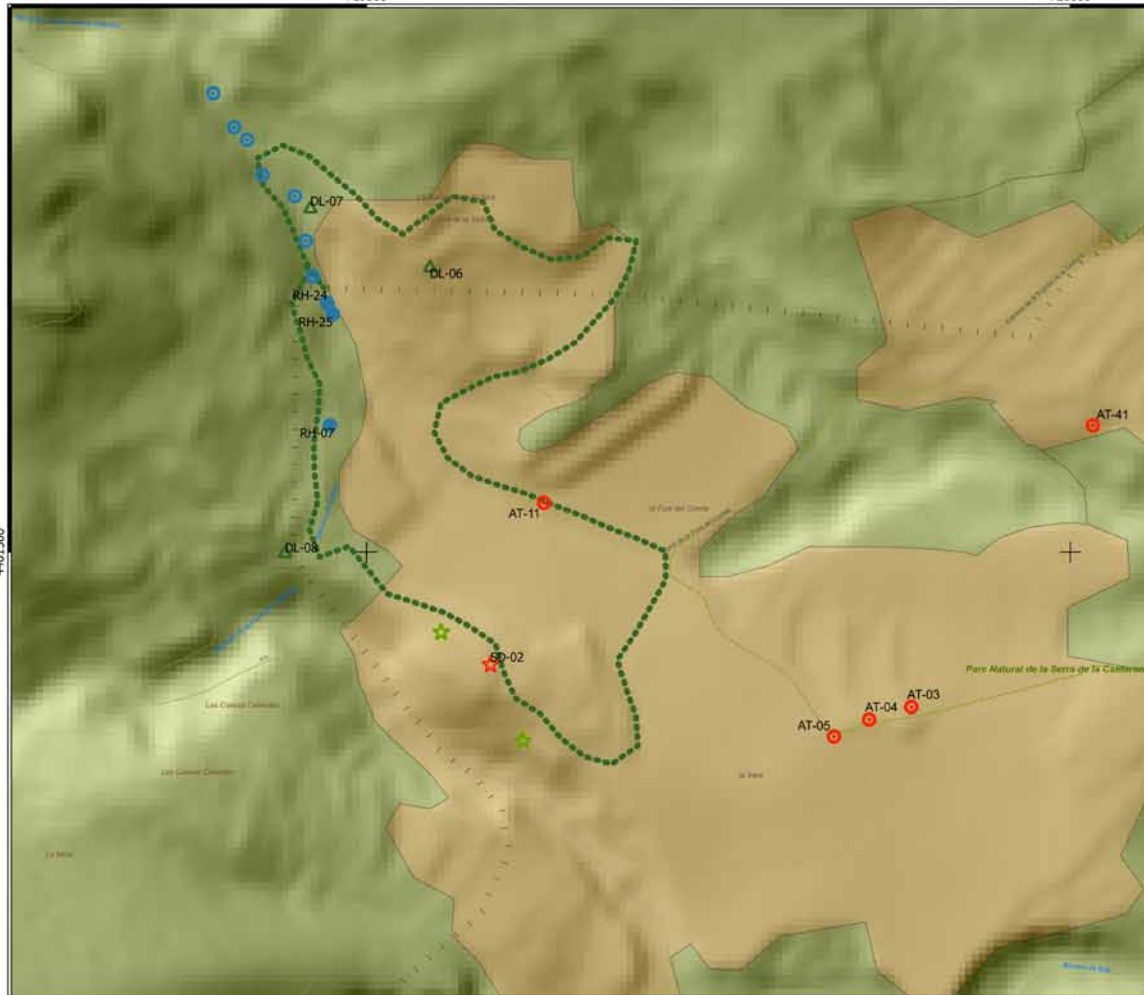
© Photographs: Centro para el Conocimiento del Paisaje, [artarc]

© Cartography: Centro para el Conocimiento del Paisaje, Institut Cartogràfic Valencià, Google Earth

© Design & layout: [artarc]

719500

720000



719500

720000

ROUTE 3

"Fuente (Spring) del Conde" and its surroundings

Route layout



Heritage resources

- Water resources
- ★ Defensive structures
- Communication system
- ☆ Botanical singularities
- ✚ Religious heritage
- △ Boundaries marks (caims)
- ⊙ Set of the "Fuente del Conde"
- ⊙ Extensive livestock farming
- ⊙ Crafts - Trades - Industry
- ⊙ Traditional agriculture

Landscape types

- Residential
- Industrial and comercial
- Extractive
- Rain-fed crops
- Irrigated crops
- Citrus fields
- Wooded
- Scrub
- Riparian
- Reservoir

Algimia d' Alfara boundary



“Fuente del Conde” is a place of marked emotional significance for Algímia d’Alfara inhabitants. It ought not to be forgotten that since 1907 it has supplied the population with water. It is constantly visited by people: for its tranquillity, excellent shade and good water, which allows families and groups of friends to enjoy picnics. It is also a heritage complex in which water harvesting and use elements concentrate along the small ravine where they are located from the highest water intake gallery to the accumulation pool a few metres below

The route takes advantage of this initial potential and stretches from the “Fuente del Conde” through its surroundings so we can see the magnificent views that dominate the municipality towards the sea, the new crops in olive groves, some of the boundary markers of the municipal boundary, the natural vegetation surrounding “Fuente del Conde” and some farmhouses in the lower part where traditional rain-fed crops still exist.



The symbolic value of places and “Fuente del Conde”

There are sites that have become references for the population. They are places treasured in people’s memories to which a symbolism and recognition are attributed that go beyond their own importance, uniqueness and usefulness. They are landmarks whose symbolism renders them examples of people’s identity with their closest environment, their town and places.

Living with them is transmitted from grandparents to parents, and from parents to children, and water sources and springs inspire emotions in them. As always, their identification and location have been more than necessary, but essential because they have allowed access to water supply. They are points that have guaranteed daily tasks being carried out in fields. When these water springs survived, they also maintained the symbolism and have become places for the pilgrimage of water supply, to enjoy its landscapes, to rest in its shady and fresh air, or to enjoy a picnic with friends and family.

In the southwestern corner of the Algímia municipal district, “Fuente del Conde” is one of these sites. Located at the head of the Yelto Ravine, it occupies a characteristic location, from where we can enjoy magnificent views of practically the entire municipality and beyond. Now it is used mainly as a place for recreation and leisure purposes.



It constitutes a small landscape feature characterised by being at the head of a narrow ravine supported by dry stone walls. There are four terraces on which a system of ponds and channels is arranged that provide the environment with plenty of freshness.

Landscape resources

The heritage complex of “Fuente del Conde” is itself a landscape resource because it is a characteristic space in which a continuum of water elements is integrated. The upper gallery is from where water arises with water transport channels, several accumulation ponds connected by these channels, the spring in the recreation area and a pool in its lowest part that formerly accumulated water for subsequent agricultural irrigation uses. It is also the point from which the initial water supply conduct of the Algímia town centre was carried out more than 100 years ago, and from whose waters it is possible to drink from the public fountains seen in some town squares.

Its environment also contains some unique elements that allow the cultural route to be enjoyed, with elements related to the Spanish Civil War, farming terraces for traditional agriculture, houses and shelters, plus broad views of the great natural spaces linking Algímia with Sierra Calderona.





1. Upper gallery
2. First Pool
3. Albarserer spring



4. Abrevadero (watering hole) del Conde
5. Fuente del Conde
6. De la Alberca Pool



7. Cairn
8. Pepica's Olive tree
9. Marzo little house

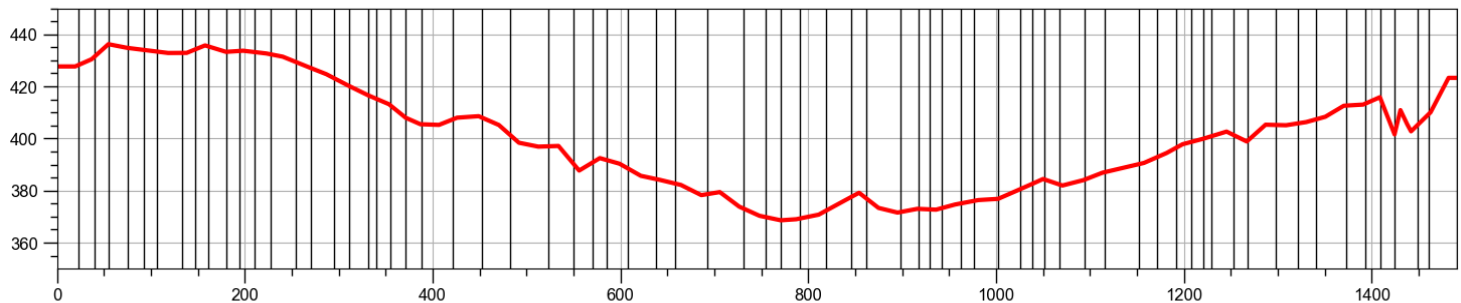


Technical characteristics

Duration	1 hora	Elevation	
Length	1,50 km	minimum altitude	378 m
Type of tour	Circular	maximum altitude	448 m
Accumulated slope		Average slope	
ascending	91 m	ascending (+)	11,00%
descending	- 91 m	descending (-)	11,00%

Reference mapping

Map Series (scale)	Sheets	Agency
National Topographic Map (1:25000)	668-I	Instituto Geográfico Nacional
Reference Mapping (1:50000)	12. El Camp de Morvedre	Ins. Cartogràfic Valencià
Reference Mapping (1:5000)	CV05-66825, 66834, 66835, 66836, 66844, 66845, 66846, 66854, 66855	Ins. Cartogràfic Valencià



Take care of the environment
Respecting nature



We must remember that when we do outdoor activities, such as the cultural routes of Algímia, we come into contact with tasks that other people do or with nature itself. Let's be respectful to these other occupants. In their design, all routes are circular, and their starting and ending points are located in places where there are containers and parking spaces.

Please sensibly manage the environment by taking into account the following considerations:

Waste: Use the authorised containers at the start-end points and leave rubbish in the appropriate ones. Do not leave rubbish on fields.

Noise: Try not to make loud noise; do not wear devices that make loud sounds, do not yell in fields. Please respect other inhabitants.

Traffic: Leave vehicles at the starting point of the route, which you will find in the same place. Avoid making unnecessary trips. Do not drive along the routes designed for walking or cycling with vehicles, unless it is absolutely essential.

Thank you very much for your **Cooperation**





Algímia d'Alfara | Algímia en el **Cor**

www.algimiadealfara.es



ajuntament d'algímia d'alfara



@ajuntamentdalgímia



CENTRO PARA EL CONOCIMIENTO DEL PAISAJE

C/ San Miguel, nº 41 12415 Matet (Castellón) T : 646 414 786
www.cpaisaje.org info@cpaisaje.org



VALÈNCIA
TURISME