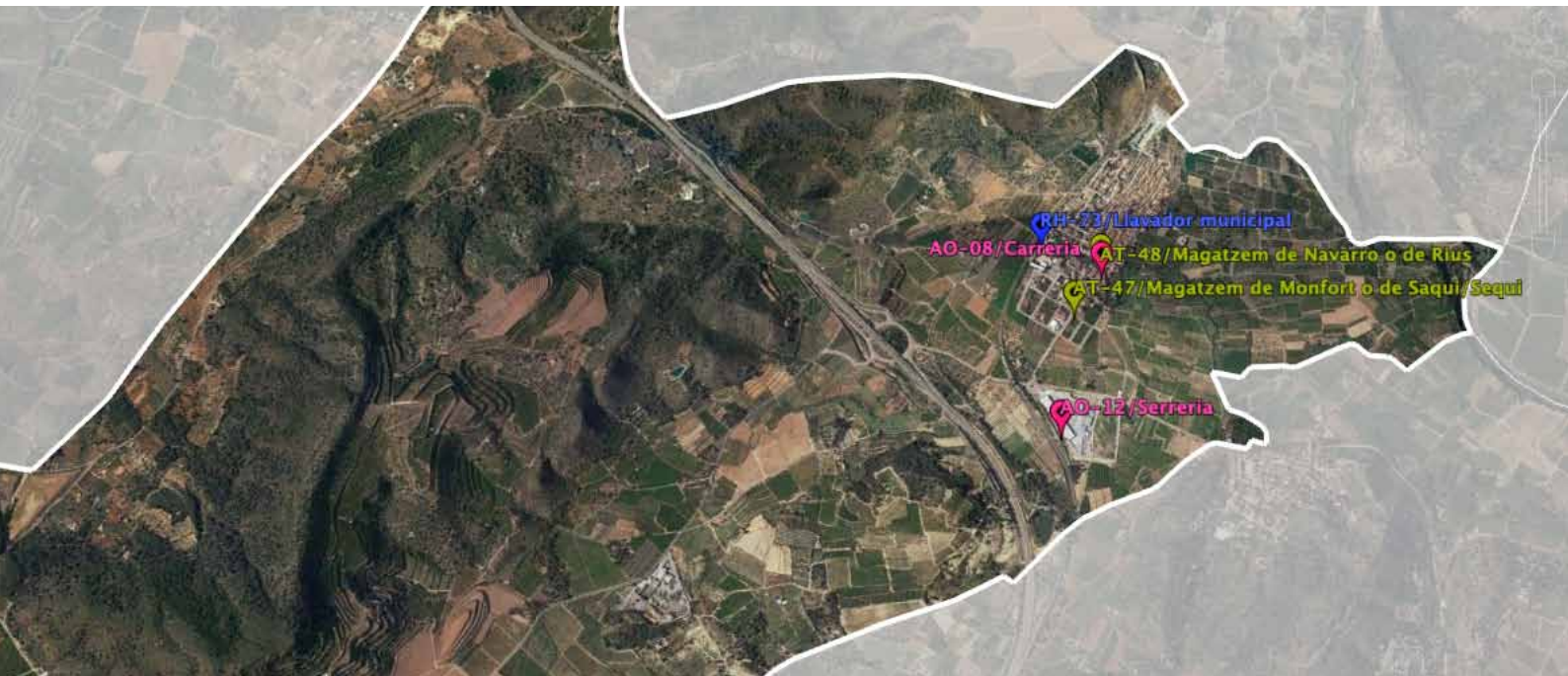


Landscapes and heritage of Algímia d'Alfara

Cultural routes





Algímia d'Alfara | Algímia en el **Cor**

Ajuntament d'Algímia d'Alfara

plaça San Vicente 1, 46148 Algímia d'Alfara

www.algimiadealfara.es aalfara@gva.es 962626053

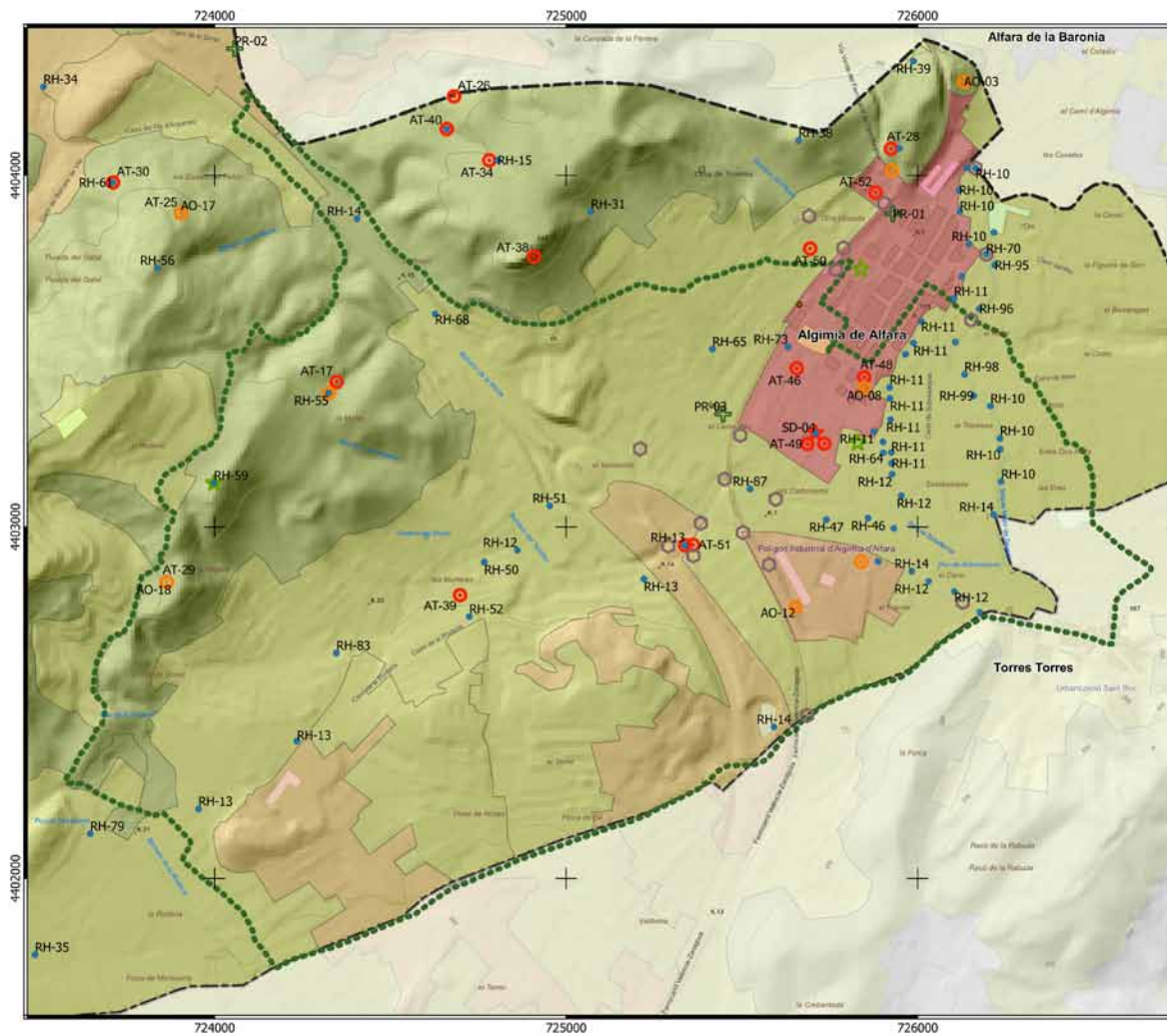
Coordination: Ajuntament d'Algímia d'Alfara, Centro para el Conocimiento del Paisaje

Texts: Juan A. Pascual, Helios Borja, Rafael Belda

© Photographs: Centro para el Conocimiento del Paisaje, [artarc]

© Cartography: Centro para el Conocimiento del Paisaje, Institut Cartogràfic Valencià, Google Earth

© Design & layout: [artarc]



ROUTE 5

The imprint of communication routes, a walk through their past and present

Route layout

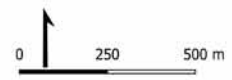


Heritage resources

- Water resources
- ★ Defensive structures
- Communication system
- ☆ Botanical singularities
- ✚ Religious heritage
- ▲ Boundaries marks (caims)
- Set of the "Fuente del Conde"
- Extensive livestock farming
- Crafts - Trades - Industry
- Traditional agriculture

Landscape types

- Residential
- Industrial and commercial
- Extractive
- Rain-fed crops
- Irrigated crops
- Citrus fields
- Wooded
- Scrub
- Riparian
- Reservoir
- Alfarma d' Alfara boundary



A unique feature of Algímia d'Alfara is the variety of roads, highways and railways in its municipal area. This is the result of having to access fields and mountains to perform the daily activities that were to be done and were also imposed by being located on a communications axis that has existed since ancient times.

It has been considered vital to connect the Mediterranean coast with the inland Iberian Peninsula by means of roads, railways and, more currently, the Mudéjar motorway.

The actual network of communication routes now allows a thematic route to be organised for walkers, and some rural roads, with very little traffic, facilitate walkers' mobility; others are the old paths still employed by locals. The mining (Ojos Negros) trainroute is already a consolidated greenway.

The thematic singularity of the route, as well as the functional and typological variety of roads that has just been explained, also contains some of the cultural elements inherent to communication systems, and highlight the different historic-construction styles of bridges, water paths, railway stations and associated buildings.



The Algímia d'Alfara communications system

The network of roads that Algímia has today is characterised by being a structure in which different strategic communication needs coincide, from autonomous and national ones to those providing a commuter communication service or allow access to the scattered houses and cultivation fields in the municipal area.

Consequently, the result is a landscape which distinguishes various structures, of which the main road system goes from Sagunto to beyond Teruel via the Mudéjar motorway; the railroad with a stop for the local train, goes to Barracas, which is shared by medium-distance trains; local roads access the neighboring towns of Serra, Torres Torres and Alfara de la Baronía, along with the municipal network of roads of all kinds that go to all the places located in this area. There are more elements, such as the old mining railway line (now converted into a cycling Greenway, the longest in Spain) and livestock routes. Many of the town's neighbouring roads are recognisable on historic maps, as they have been registered for more than 100 years at least.

If we look closely at today's map of Algímia's communications network, we see that the distribution of its system, albeit being dense, is not uniformly distributed throughout the land. Obviously, the road network is greater in those places where one has to go more often and there are more properties. There are roads with access to cultivation fields. This pattern, be it with a



smaller number, is also seen in the network of historic roads, which was on the map in the early twentieth century and confers the route a unique landscape-cultural value.

Landscape resources

The main element as a landscape resource is the same road system through which the cultural route is drawn. The itinerary combines the still existing layout of historic roads and part of the old Ojos Negros railway line to integrate them with the municipality's different landscape environments.

In turn, those heritage elements incorporated into the cultural route are especially related to the construction characteristics of roads, such as bridges (for railroads, roads and motorways), sewers (a type of narrow bridge that allows the passage of, usually, runoff), dams (known as travas that are dry stone constructions found in ravines to channel torrential streams produced by heavy rains), stations and other buildings like that which still exists on the greenway for monitoring crossing people.

Other landscape resources are also used to help to understand the historic existence of roads and relate them to their landscapes, such as horizontal water wheels (for the agricultural use of shallow groundwater) and the survival of unique trees that belong to historic rain-fed crops.





1. Piu bridge
2. Highway "tagea" (small water path)
3. Bridges (RENFE i via minera)



4. Bória Horizontal Waterwheel
5. Rodeno Cork Oak Tree
6. Dam of la carretera (motorway)



7. The Pathkeeper's House
8. Station on the Mining railroad
9. De la Vía Bridge

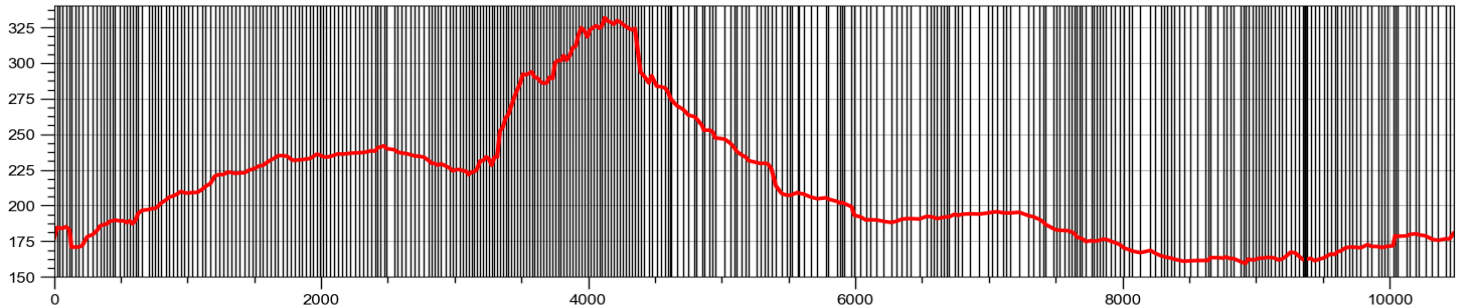


Technical characteristics

Duration	4-5 hours	Elevation	
Length	11,80 km	minimum altitude	160 m
Type of tour	Circular	maximum altitude	341 m
Accumulated slope		Average slope	
ascending	302 m	ascending (+)	4,20%
descending	- 302 m	descending (-)	4,40%

Reference mapping

Map Series (scale)	Sheets	Agency
National Topographic Map (1:25000)	668-I	Instituto Geográfico Nacional
Reference Mapping (1:50000)	12. El Camp de Morvedre	Ins. Cartogràfic Valencià
Reference Mapping (1:5000)	CV05-66825, 66834, 66835, 66836, 66844, 66845, 66846, 66854, 66855	Ins. Cartogràfic Valencià



Take care of the environment
Respecting nature



We must remember that when we do outdoor activities, such as the cultural routes of Algímia, we come into contact with tasks that other people do or with nature itself. Let's be respectful to these other occupants. In their design, all routes are circular, and their starting and ending points are located in places where there are containers and parking spaces.

Please sensibly manage the environment by taking into account the following considerations:

Waste: Use the authorised containers at the start-end points and leave rubbish in the appropriate ones. Do not leave rubbish on fields.

Noise: Try not to make loud noise; do not wear devices that make loud sounds, do not yell in fields. Please respect other inhabitants.

Traffic: Leave vehicles at the starting point of the route, which you will find in the same place. Avoid making unnecessary trips. Do not drive along the routes designed for walking or cycling with vehicles, unless it is absolutely essential.

Thank you very much for your **Cooperation**





Algímia d'Alfara | Algímia en el **Cor**

www.algimiadealfara.es



ajuntament d'algímia d'alfara



@ajuntamentdalgímia



CENTRO PARA EL CONOCIMIENTO DEL PAISAJE

C/ San Miguel, nº 41 12415 Matet (Castellón) T : 646 414 786
www.cpaisaje.org info@cpaisaje.org



VALÈNCIA
TURISME