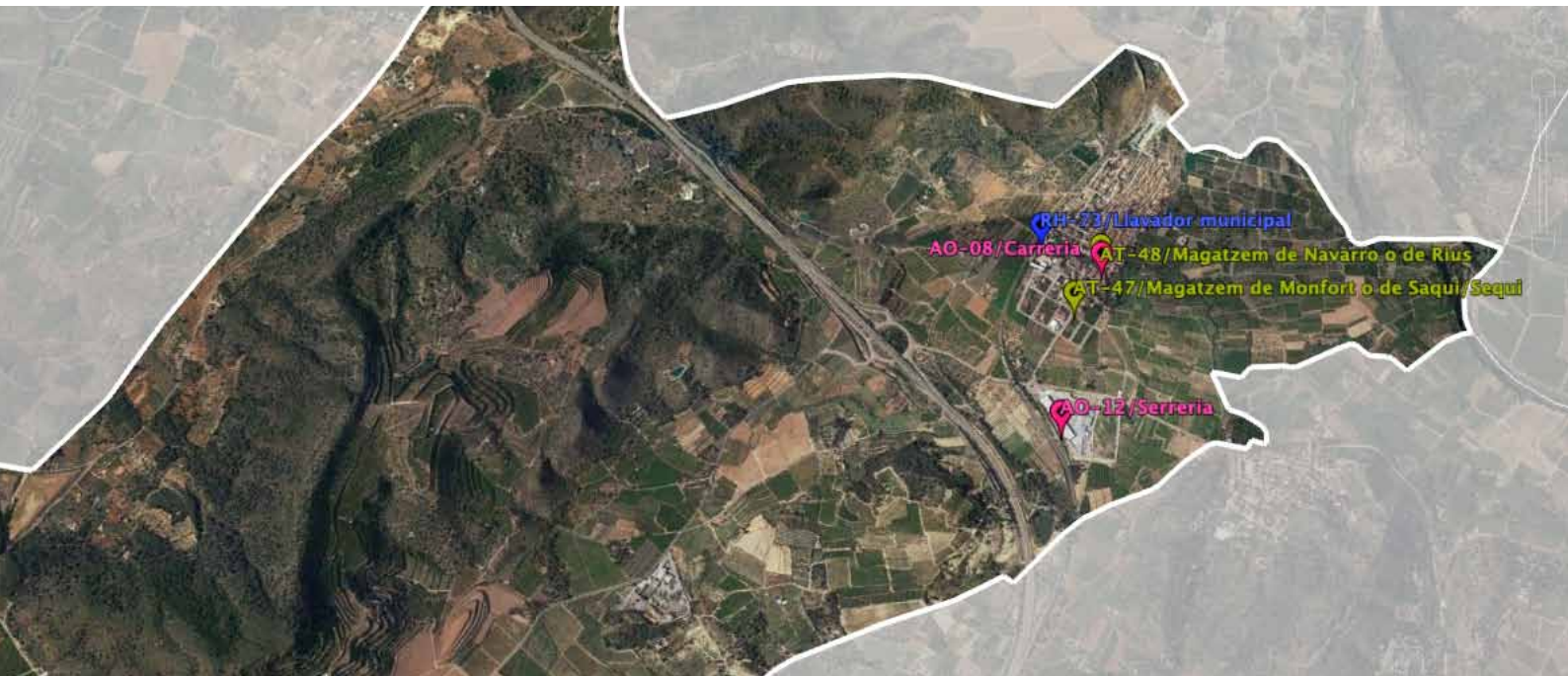


# Landscapes and heritage of Algímia d'Alfara

## Cultural routes





# Algímia d'Alfara | Algímia en el **Cor**

Ajuntament d'Algímia d'Alfara

plaça San Vicente 1, 46148 Algímia d'Alfara

[www.algimiadealfara.es](http://www.algimiadealfara.es) [aalfara@gva.es](mailto:aalfara@gva.es) 962626053

Coordination: Ajuntament d'Algímia d'Alfara, Centro para el Conocimiento del Paisaje

Texts: Juan A. Pascual, Helios Borja, Rafael Belda

© Photographs: Centro para el Conocimiento del Paisaje, [artarc]

© Cartography: Centro para el Conocimiento del Paisaje, Institut Cartogràfic Valencià, Google Earth

© Design & layout: [artarc]

# ROUTE 6

Cycling through Algimia d'Alfara

## Route layout

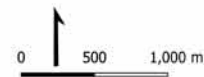
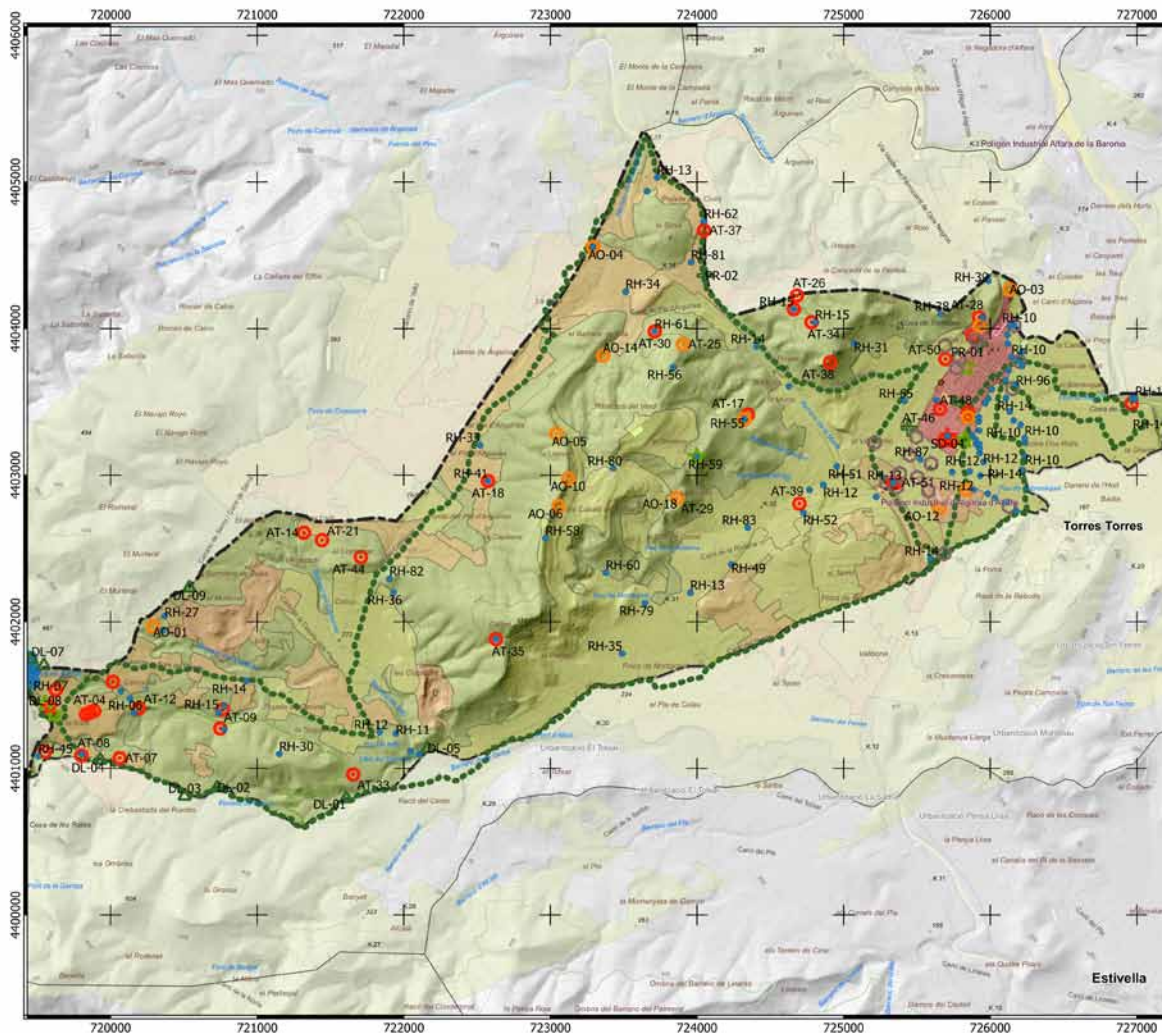


## Heritage resources

- Water resources
- ★ Defensive structures
- Communication system
- ☆ Botanical singularities
- ✚ Religious heritage
- △ Boundaries marks (caims)
- ⬢ Set of the "Fuente del Conde"
- ⊙ Extensive livestock farming
- ⊙ Crafts - Trades - Industry
- ⊙ Traditional agriculture

## Landscape types

- Residential
- Industrial and commercial
- Extractive
- Rain-fed crops
- Irrigated crops
- Citrus fields
- Wooded
- Scrub
- Riparian
- Reservoir
- Algimia d' Alfara boundary



The variety of environments and landscapes that Algímia d'Alfara contains justifies the bicycle route through the municipal area, which is helped by a good system of rural roads. In addition, the fact that the old mining railway greenway passes through the municipality is an added value to venture on a comprehensive tour of Algímia.

The route was built after taking into account the diversity of the environments and landscapes, ranging from traditional irrigation systems to the northern Sierra Calderona slopes and the traditional rain-fed landscapes that still remains in the municipality. Moreover, the connectivity between different road networks was considered, including the historic rural areas, old mining railway greenway and those of the traditional irrigated areas on the alluvial plains of the Palancia River.



## A municipality for bicycles

The bicycle world and its tourist possibilities are now considered another activity in the set of proposals for sustainable and enviro-friendly development. Apart from paying attention to the cultural and natural attractions of places, cycling is a healthy activity that, when performed in a group, also fosters good social relationships.

Undoubtedly, the Algímia d'Alfara municipality is suitable for cycling. Its attractions include its varied topography, in which flat areas are mixed with others that are somewhat more rugged and form successive alternations.

We can also find a good variety of landscapes: the Palancia River and the network of ravines descending to it from La Calderona; agricultural landscapes (traditional irrigated areas, orange fields and historic rain-fed farming); some small areas with scattered urbanisation, mountains and Fuente del Conde, a singular landmark that allows a peaceful midway thanks to its freshness and shade.

In addition, the dense network of historic roads, including the old mining (Ojos Negros) railway greenway section that passes through the municipality, makes it easy to enter and enjoy its charms and heritage elements that we will pass through while pedalling. We can enjoy them



.....

regardless of them being in the mountainous areas covered by Mediterranean vegetation or on the flatter parts bordering the Palancia River where the oldest irrigation systems are found.

## Landscape resources

The bicycle route passes through many heritage elements. At the pace of a bicycle, you can see at least one example of any of the different typologies identified in Algímia, ranging from extensive livestock activities to unique trees, including those typical of traditional agriculture, water resources or religious heritage.

However, on the route some are highlighted as significant examples of their respective typologies, such as Acequia Mayor de Sagunto, a structuring element for the irrigation of Palancia River alluvial plains; Monzonís well, an example of orange tree landscapes; farming terraces representative of old rain-fed farming systems; bridges as road infrastructure elements; the Virgen de los Desamparados Hermitage, an example of religious heritage, along with some other elements related to Algímia.

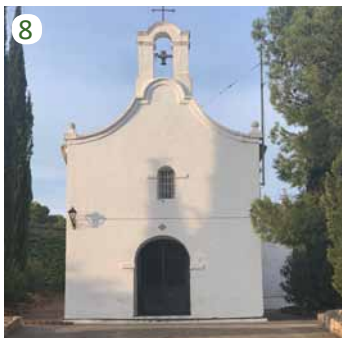




1. Palancia River
2. Acequia Mayor de Sagunto
3. RENFE bridge



4. Orange tree cultivation (Pozo de Monzonís)
5. Dry stone terraces
6. "Botiguer" House (New)



7. Small house, waterwheel and the Leopoldo pond and La Foia Lime Kiln
8. Mare de Déu dels Desemparats Hermitage
9. Algímia. Pastora's Warehouse

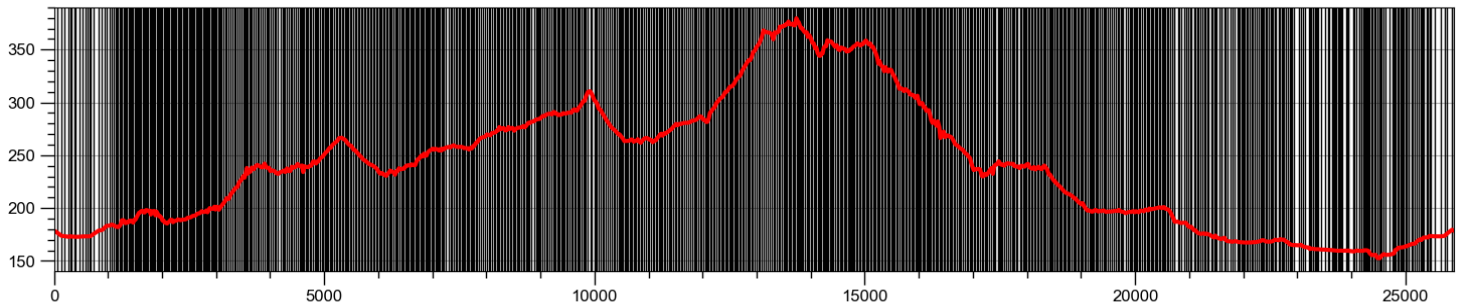


## Technical characteristics

<b>Duration</b>	<b>2-3 hours</b>	Elevation	
<b>Length</b>	<b>26,60 km</b>	minimum altitude	<b>153 m</b>
<b>Type of tour</b>	<b>Circular</b>	maximum altitude	<b>376 m</b>
<b>Accumulated slope</b>		<b>Average slope</b>	
ascending	509 m	ascending(+)	3,10%
descending	- 509 m	descending(-)	3,10%

## Reference mapping

Map Series (scale)	Sheets	Agency
National Topographic Map (1:25000)	668-I	Instituto Geográfico Nacional
Reference Mapping (1:50000)	12. El Camp de Morvedre	Ins. Cartogràfic Valencià
Reference Mapping (1:5000)	CV05-66825, 66834, 66835, 66836, 66844, 66845, 66846, 66854, 66855	Ins. Cartogràfic Valencià





Take care of the environment  
Respecting nature



We must remember that when we do outdoor activities, such as the cultural routes of Algímia, we come into contact with tasks that other people do or with nature itself. Let's be respectful to these other occupants. In their design, all routes are circular, and their starting and ending points are located in places where there are containers and parking spaces.

Please sensibly manage the environment by taking into account the following considerations:

**Waste:** Use the authorised containers at the start-end points and leave rubbish in the appropriate ones. Do not leave rubbish on fields.

**Noise:** Try not to make loud noise; do not wear devices that make loud sounds, do not yell in fields. Please respect other inhabitants.

**Traffic:** Leave vehicles at the starting point of the route, which you will find in the same place. Avoid making unnecessary trips. Do not drive along the routes designed for walking or cycling with vehicles, unless it is absolutely essential.

# Thank you very much for your **Cooperation**





# Algímia d'Alfara | Algímia en el **Cor**

[www.algimiadealfara.es](http://www.algimiadealfara.es)



ajuntament d'algímia d'alfara



@ajuntamentdalgímia



CENTRO PARA EL CONOCIMIENTO DEL PAISAJE

C/ San Miguel, nº 41 12415 Matet (Castellón) T : 646 414 786  
[www.cpaisaje.org](http://www.cpaisaje.org) [info@cpaisaje.org](mailto:info@cpaisaje.org)



**VALÈNCIA**  
TURISME